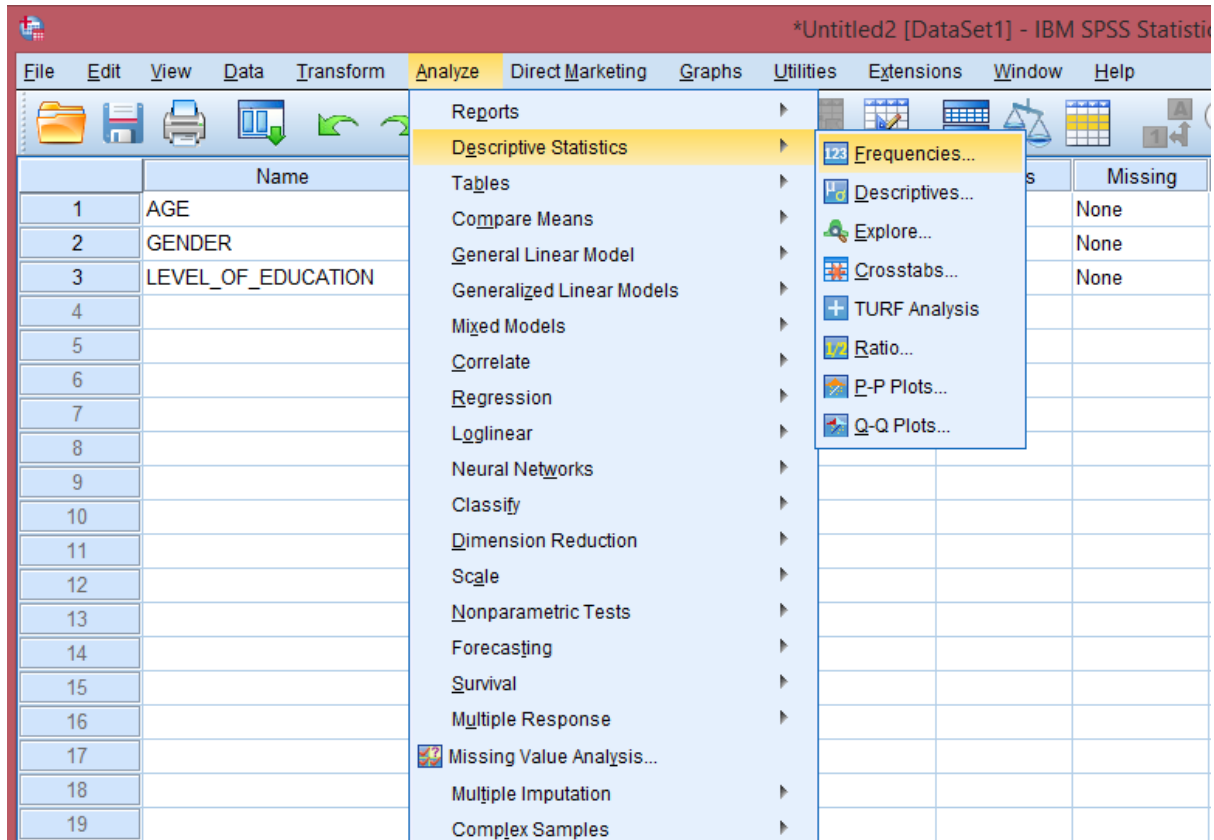
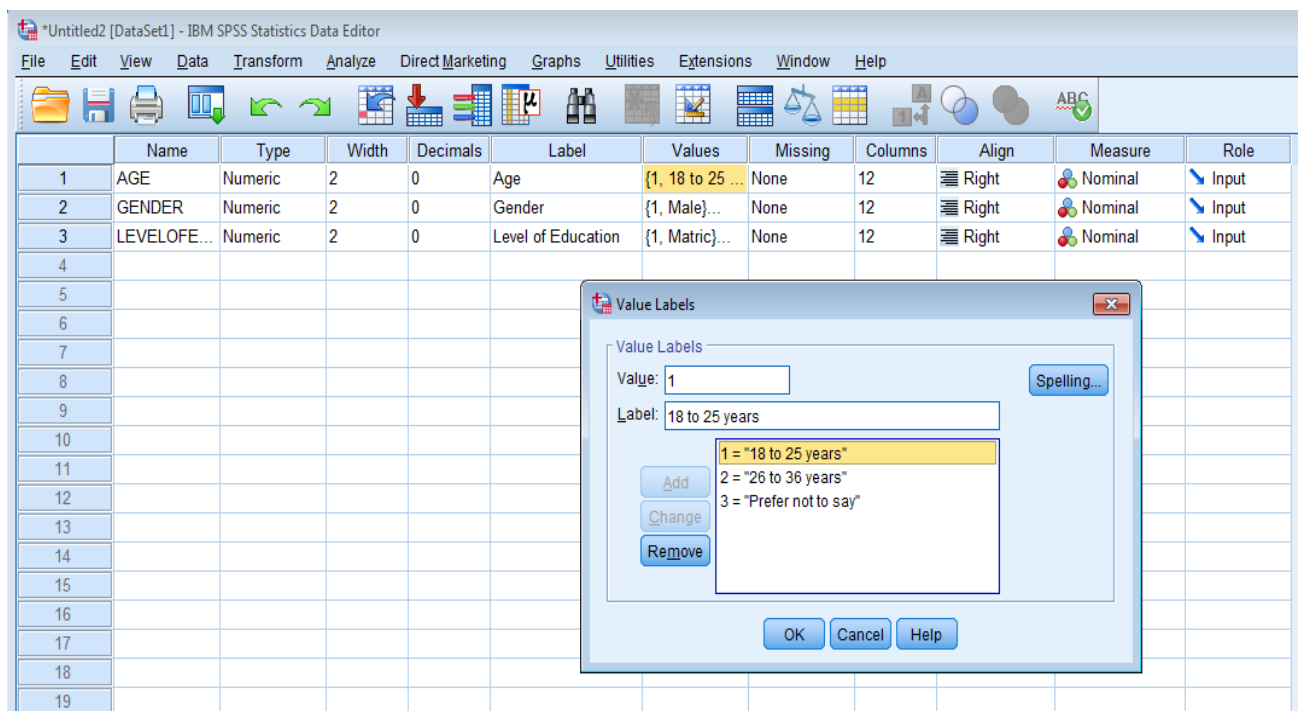


How to Calculate Descriptive Statistics

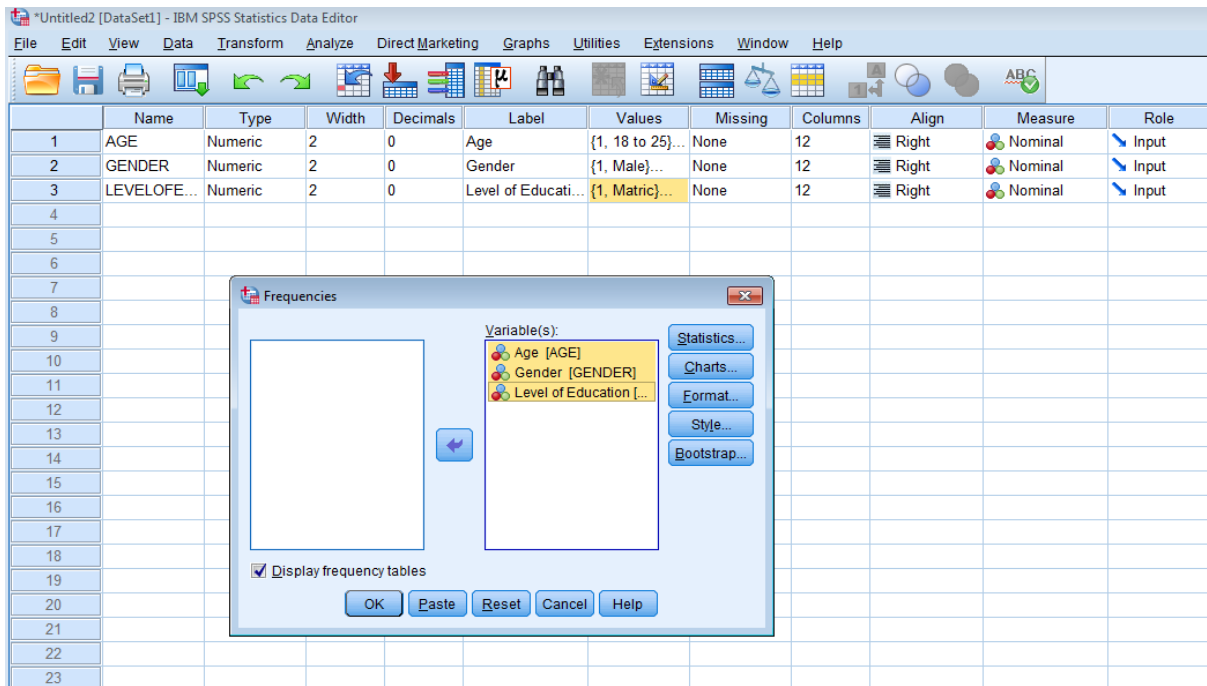
1. Analyze.
2. Descriptive Statistics.
3. Frequencies.



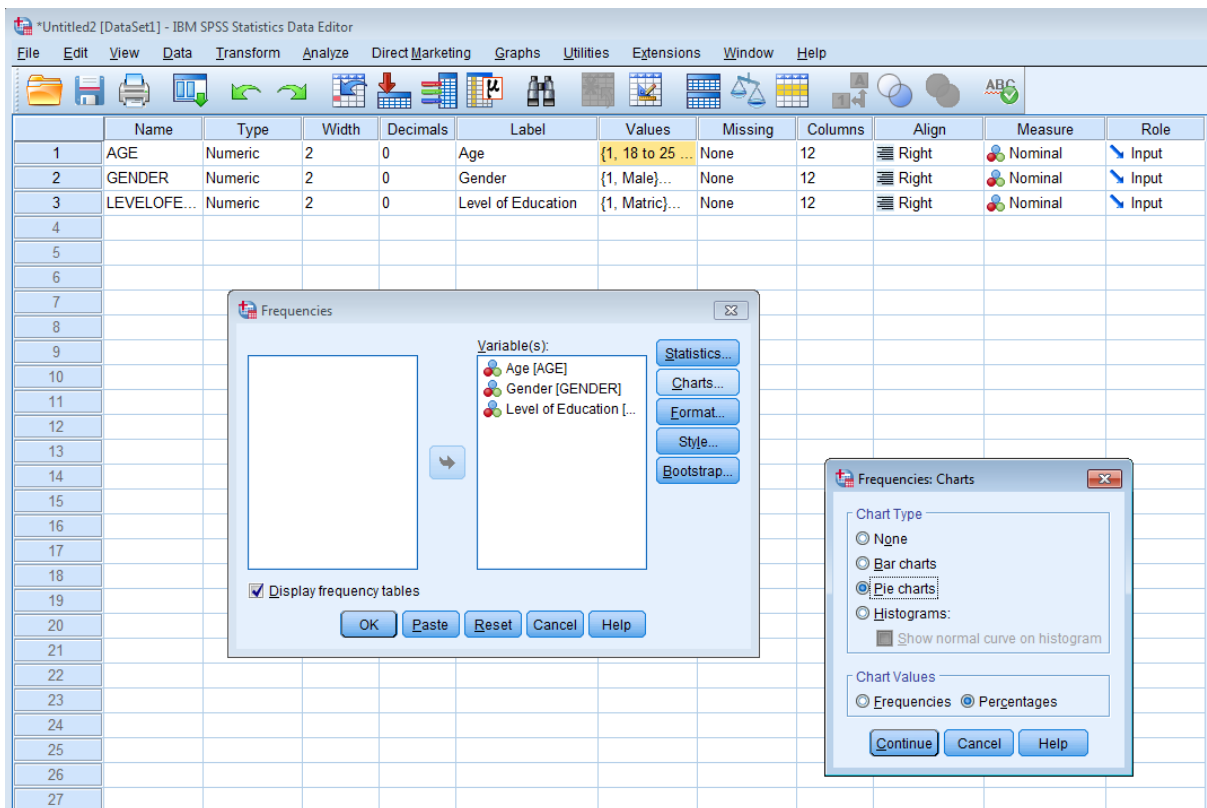
4. Allocate a value and a label then click on OK.



5. Move all the frequencies (Age, Gender and Level of education) to the right window (under variables).



6. Click on charts then select pie charts. Thereafter, click on percentages then click on OK.



7. Windows with pie charts will appear.

